



# CEFALIN

## UNTIMELY SOLUTION FOR INJECTION

### COMPOSITION

Cephalexin sodium.....300 mg  
 Chlorpheniramine maleate.....10 mg  
 Dexamethasone sodium phosphate ..... 0.5 mg  
 Excipient to..... 1 ml



### PROPERTIES

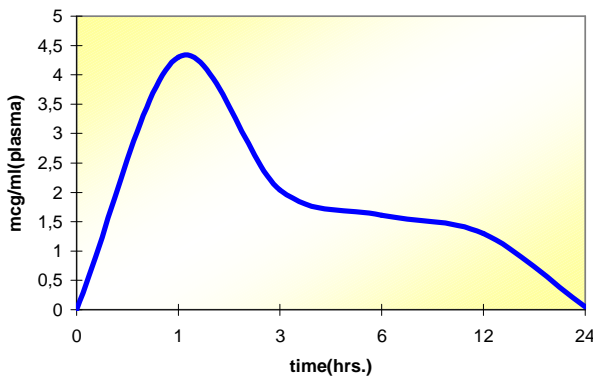
- ❖ **CEPHALEXIN** is a wide spectrum antibiotic and resistant to  $\beta$ -lactamases.
- ❖ **CEPHALEXIN** is not metabolized in vivo and its active form is eliminated in the urine.
- ❖ **CEPHALEXIN** presents a high clinical efficacy due to the short time that it takes to attain the maximum concentration in serum.

### DOSAGE AND ADMINISTRATION ROUTE

By intramuscular or slow intravenous route.

- **Bovine:** 1 ml of CEFALIN / 40 kg b.w., daily, for 3-5 days.  
*Mastitis:* 1 ml of CEFALIN / 40 kg b.w., twice a day, for 3-5 days.
- **Swine, ovine:** 1 ml of CEFALIN / 30 kg b.w., daily, for 3-5 days.
- **Dogs:** 0.33 ml of CEFALIN / 10 kg b.w., daily, for 3-5 days.

SERUM CONCENTRATIONS OF CEPHALEXIN AFTER ADMINISTERING 10 mg/kg b.w. BY I.M. ROUTE



**CEFALIN** presents a **HIGH CLINICAL EFFICACY** in the TREATMENT of

**RESPIRATORY DISEASES, SEPTICAEMIAS  
 MENINGITIS, PYODERMAS, MASTITIS, METRITIS**

### PRESENTATION

Box with 1 powder vial and 1 solvent vial of 25 ml

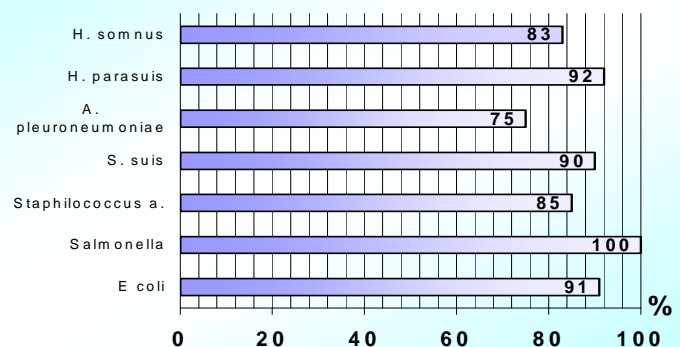
### WITHDRAWAL PERIOD

MEAT: *Ovine:* 3 days; *Bovine:* 4 days; *Swine:* 2 days  
 MILK: *Dairy cows:* Nil; *Sheep:* Not determined

*Staphylococcus spp. Yersinia spp. Pasteurella spp.  
 Actinobacillus pleuroneumoniae E.coli Salmonella spp.  
 Corinebacterium spp. Streptococcus spp. Haemophilus spp.  
 Proteus mirabilis Klebsiella spp. Pseudomonas spp.*

**CEFALIN** is a **FIRST ELECTION PRODUCT** against GRAM + and GRAM - germs

### SENSITIVITY TO CEFALIN



**SUPER'S DIANA, S.L.**

Ctra. C-17, km 17

08150 Parets del Vallès (BARCELONA) SPAIN

Tel. +34 93 8437536 / Fax. +34 93 8436545

E-mail: [export@supersdiana.com](mailto:export@supersdiana.com)

[www.supersdiana.com](http://www.supersdiana.com)